

SSH 課題研究

統計を利用した小説文の解析

—芥川賞と直木賞—

影本千晴 田中奈々 深水文乃 三宅菜月

①～④ 芥川賞作品 ⑤～⑧ 直木賞作品

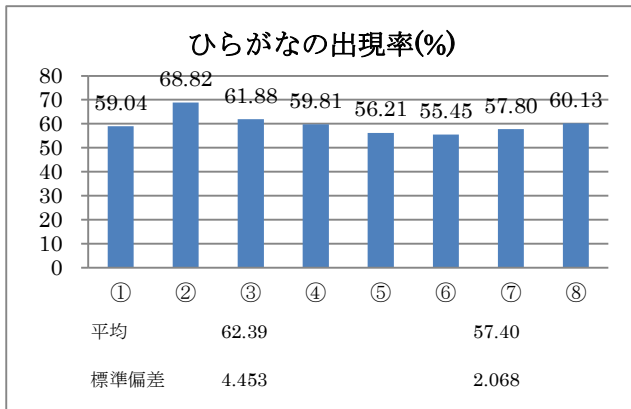


図 1

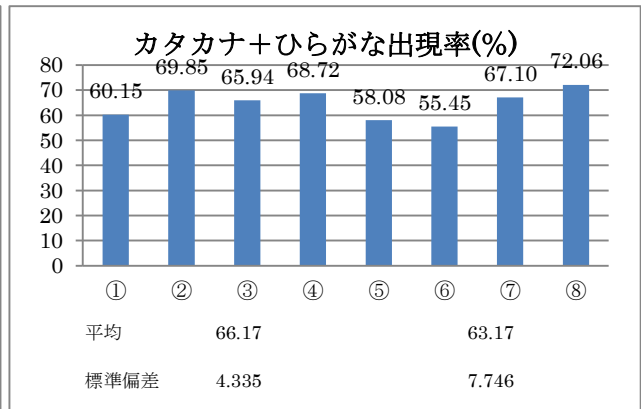


図 2

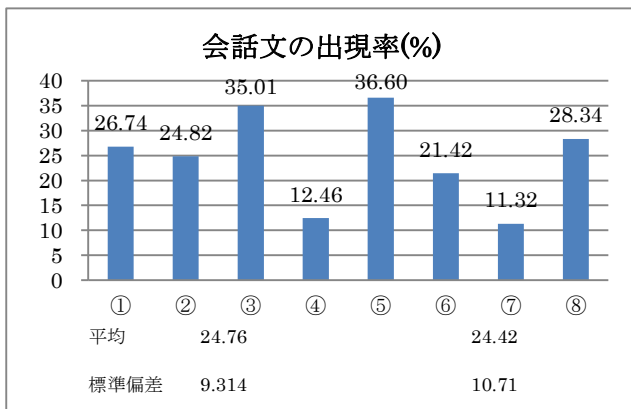


図 3

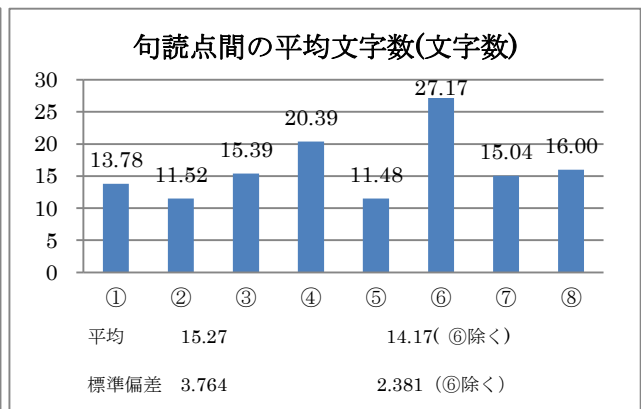


図 4

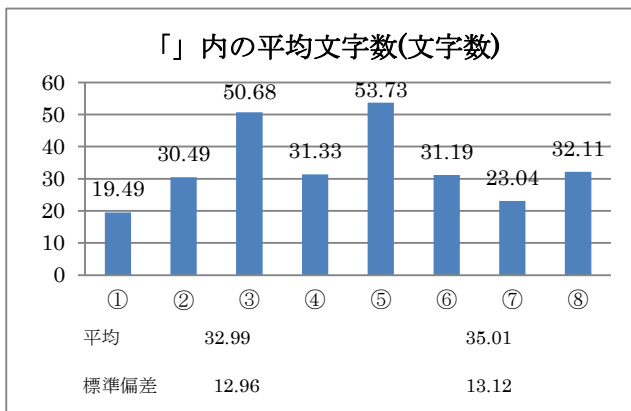


図 5

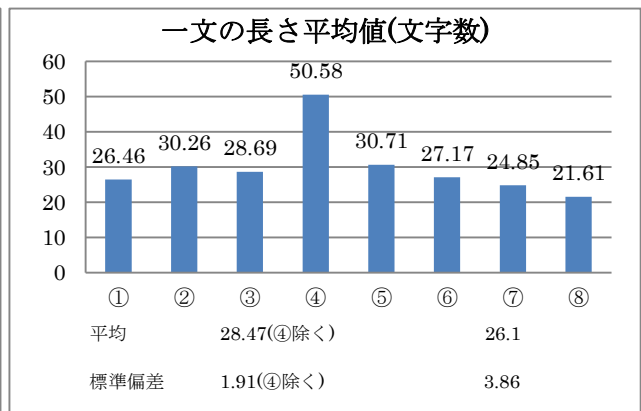


図 6

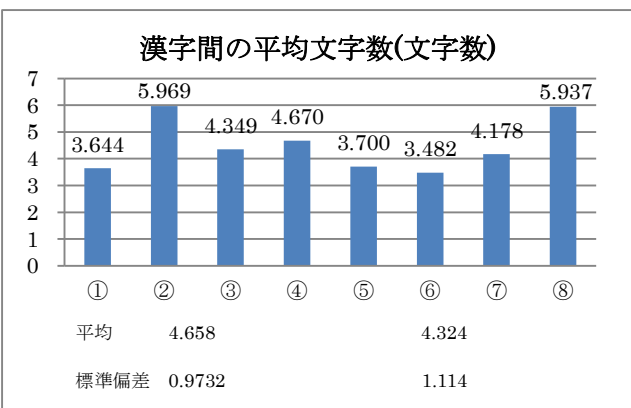


図 7

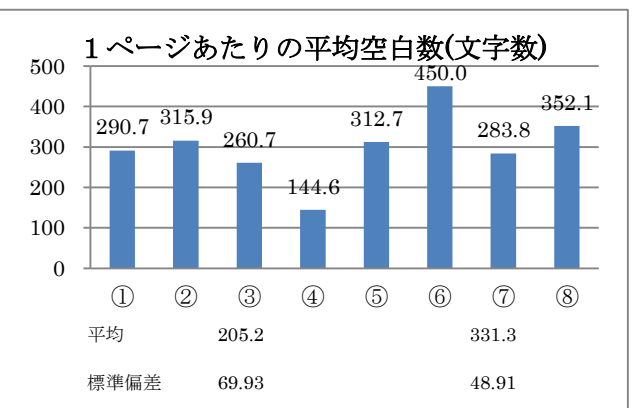
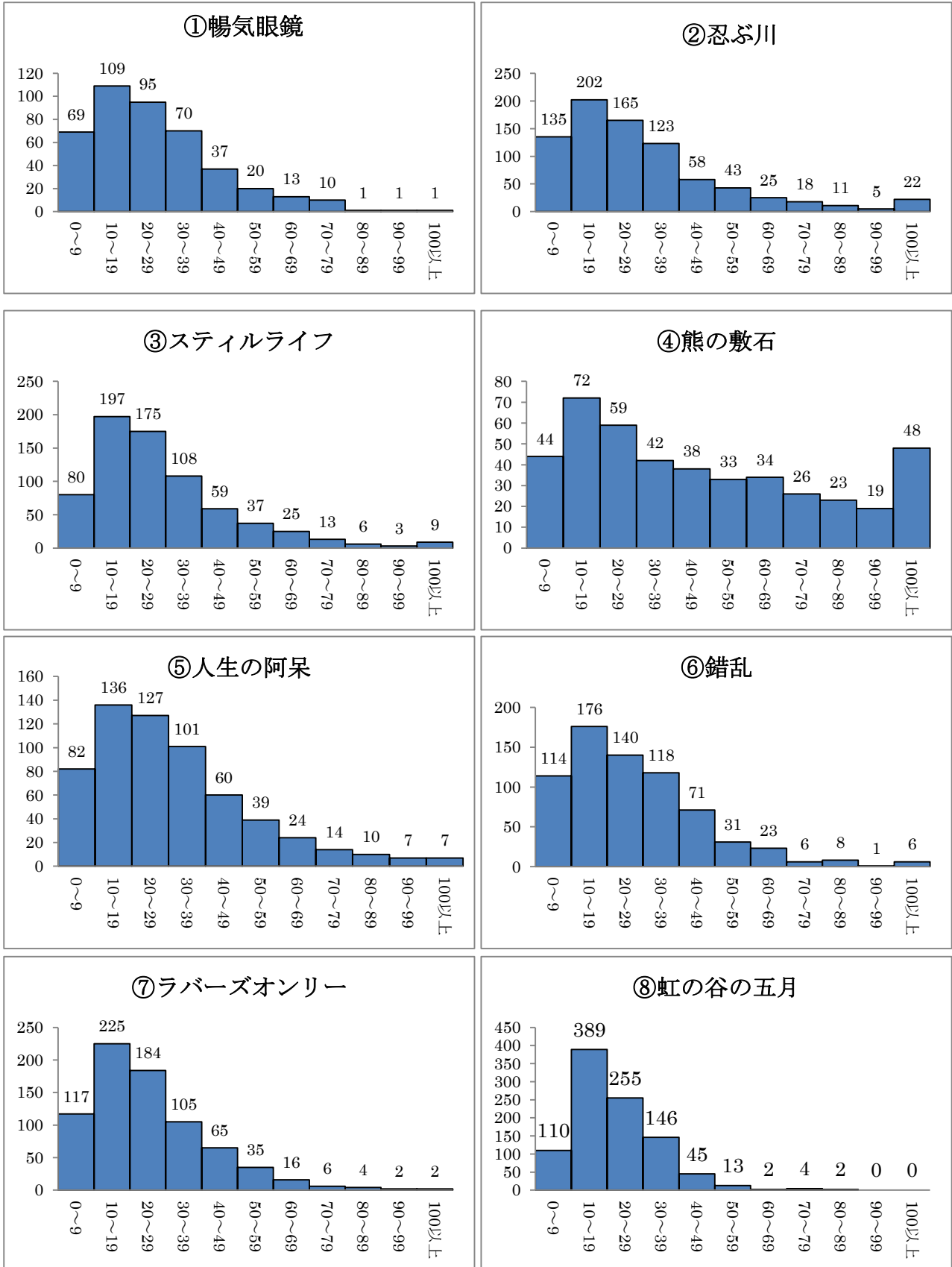


図 8

図9 1文の長さ

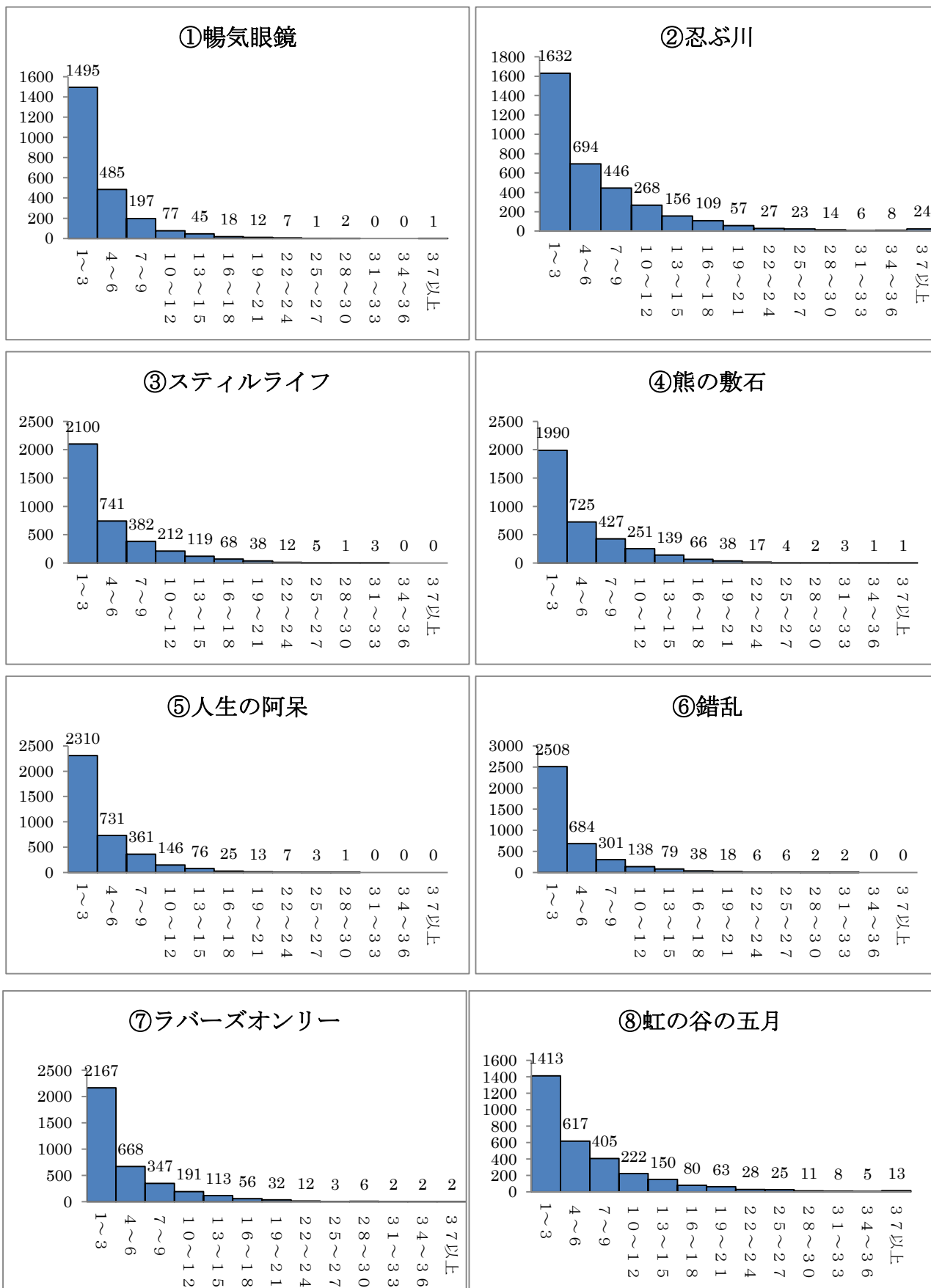


対数変換

直線の傾きの平均値 ①~④ (芥川賞) -0.1655

⑤~⑧ (直木賞) -0.2442

図10 漢字間の文字数



対数変換

直線の傾きの平均値 ①~④ (芥川賞) -0.2613

⑤~⑧ (直木賞) -0.2609